

Our Voice Our Choice Our Port

Online Participatory Budgeting – Precipis

There is tangible proof that the pandemic has had a disproportionate impact on those who are older, carers and other vulnerable groups, including young people. In order to better understand this information, research was undertaken by Newport City Council and the Fairness Commission to identify how specific were disproportionately affected by COVID-19. The work identified a range of COVID impacts on the eight groups, as listed below:

- Black, Asian and minority ethnic community (BAME)
- Disabled people and carers
- Older people and carers
- Children aged 10-17
- Young people aged 18-25
- LGBTQ+ community
- Refugees and asylum seekers and migrants
- Welsh language speakers

In order to help the above groups to emerge from COVID-19, it was decided that a public budget of £100,000 would be used to generate ideas and help the community develop local projects that could help the vulnerable groups identified emerge from the pandemic. The idea was to build social capital, connecting communities and groups that may or may not be aware of each other. Although the funding for the Newport programme, £100,000 was provided by the Aneurin Bevan Health Board via Early Years and Prevention Funding, the programme was overseen by Newport City Council.

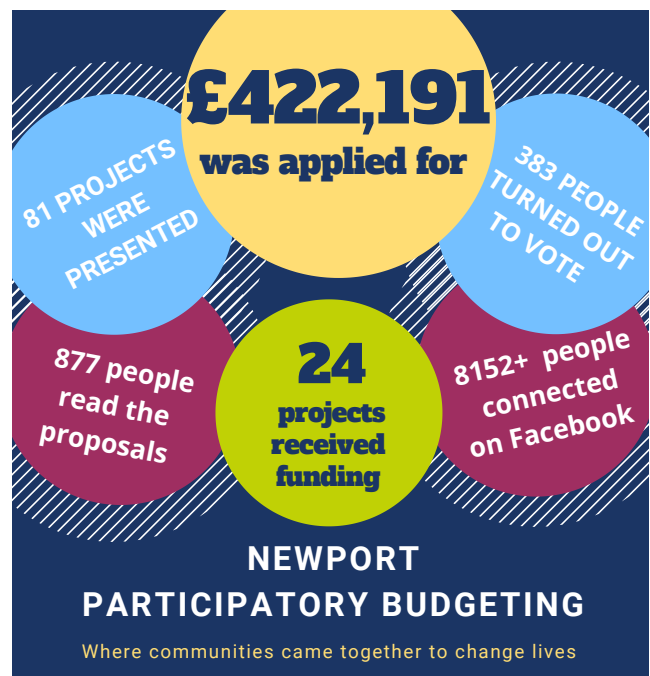
As a result of restrictions imposed as a result of the pandemic it was decided that the whole programme would be delivered online using the training and support materials developed and tested by engagement specialists MutualGain.

A community and organisational planning group was formed to manage the event and make key decisions in relation to the criteria to be followed by applicants. Following the launch of the application process, 81 applicants were invited to create a short film in support of their bid. The short films would be shown across four separate events over the 28th and 29th March.

The community of Newport were invited to register to vote at the events. Out of a total of 877 who registered 383 attended across the four voting events. In total, 24 of the 81 projects were support.

The feedback from those attending was very positive with many commenting that they would like to connect and support organisations, whether the were successful or not.

Key figures from the programme are shown below. The full report can be obtained by email to one.newport@newport.gov.uk



So many amazing projects and great to see so many amazing projects in the Newport area supporting each other – Kelly Anderson

